

Anatomy of the inguinal and femoral canals: TEP view of hernias

Takako Eva Yabe

Definition

- Protrusion, bulge or projection of an organ or part of an organ through the body wall that normally contains it.

Epidemiology

- Inguinal hernia is more common than femoral hernia. [1]
- Femoral hernia is less than 10 percent of groin hernia but more common to have complications (incarceration, strangulation)
- Indirect inguinal hernia is the most common groin hernias in both sexes.

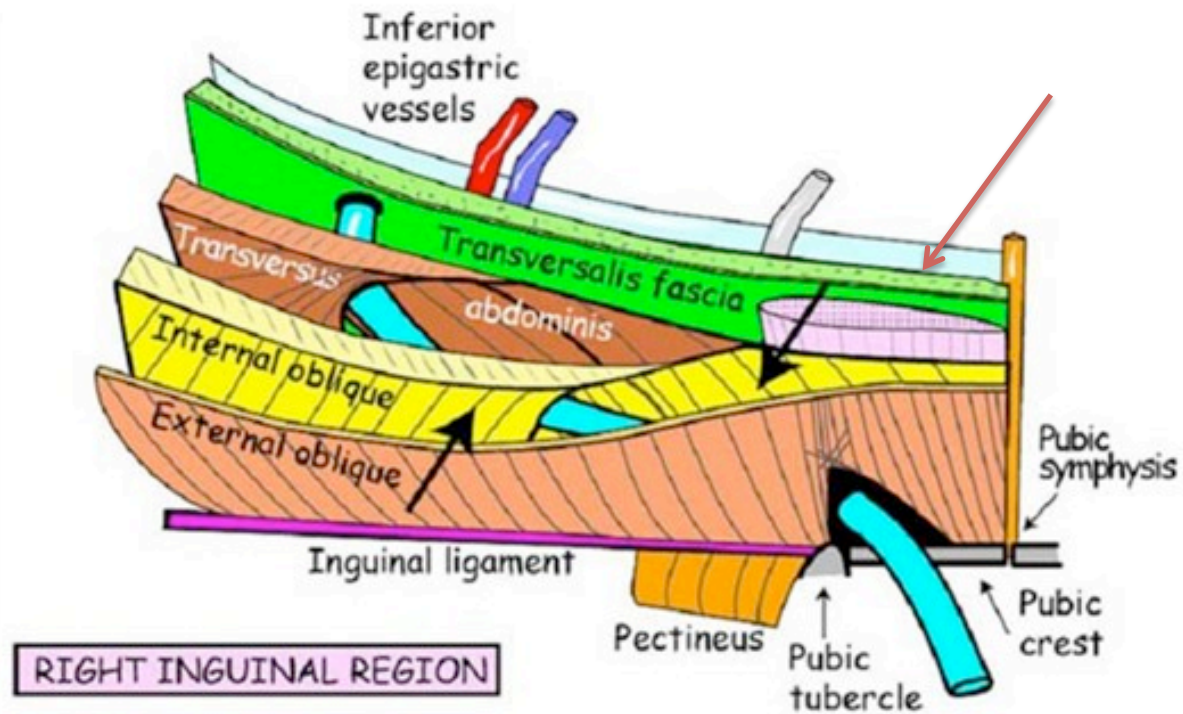
Risk factors

- History of hernia or prior hernia repair
- Older age
- Male sex
- Caucasian race
- Chronic cough
- Chronic constipation
- Abdominal wall injury
- Smoking
- Family history of hernia

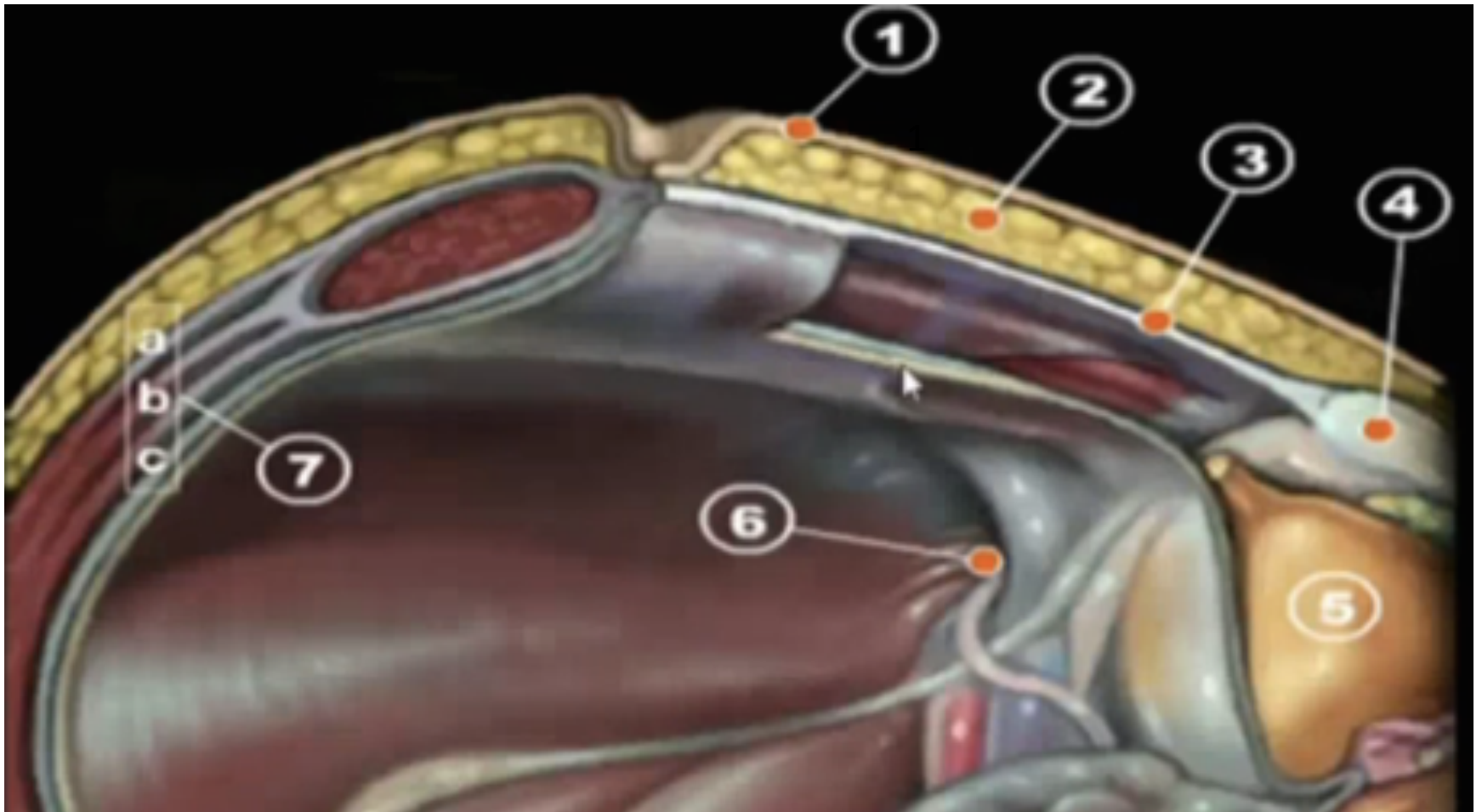
Anatomical classification

- Indirect inguinal hernia
- Direct inguinal hernia
- Femoral hernia

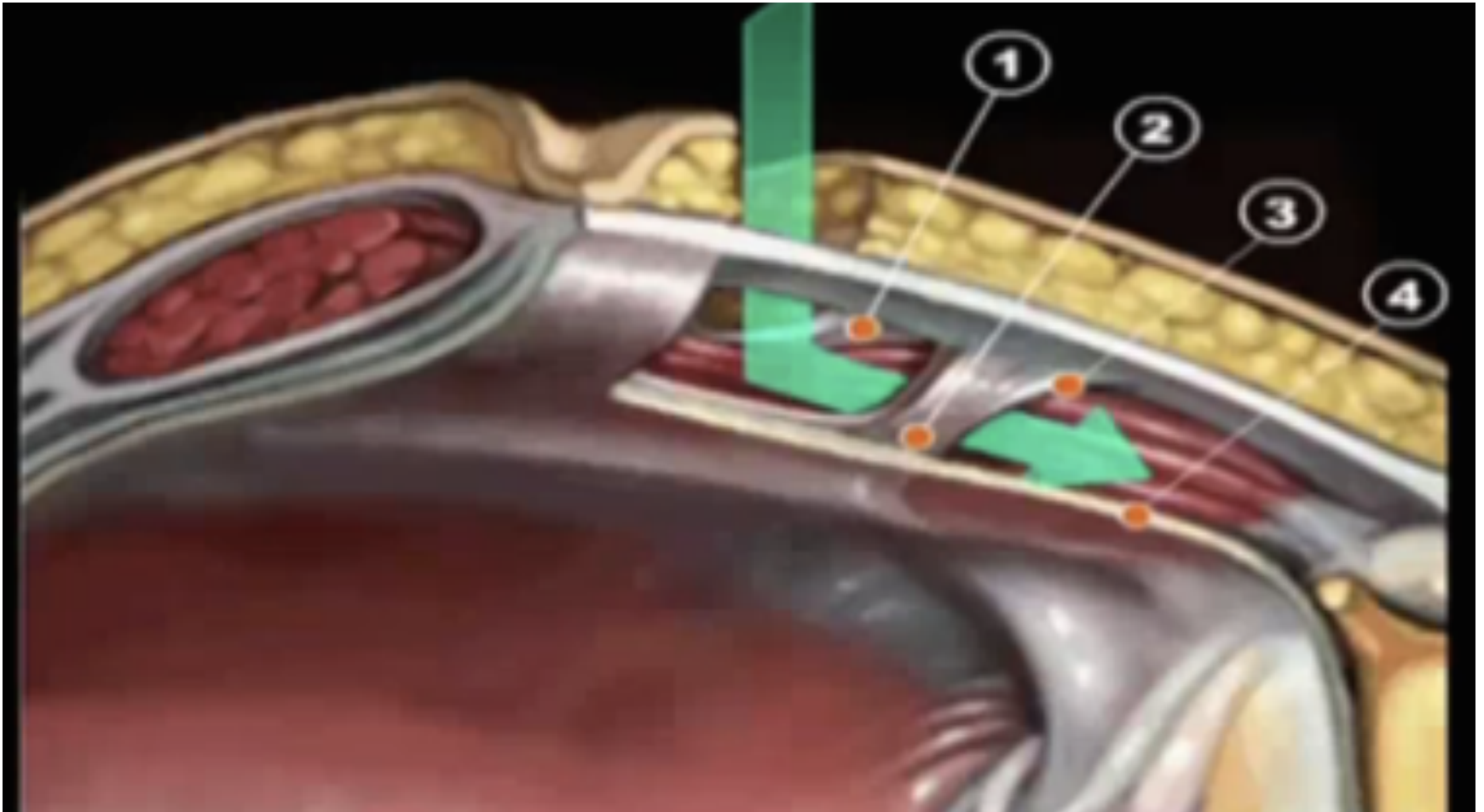
Inguinal canal



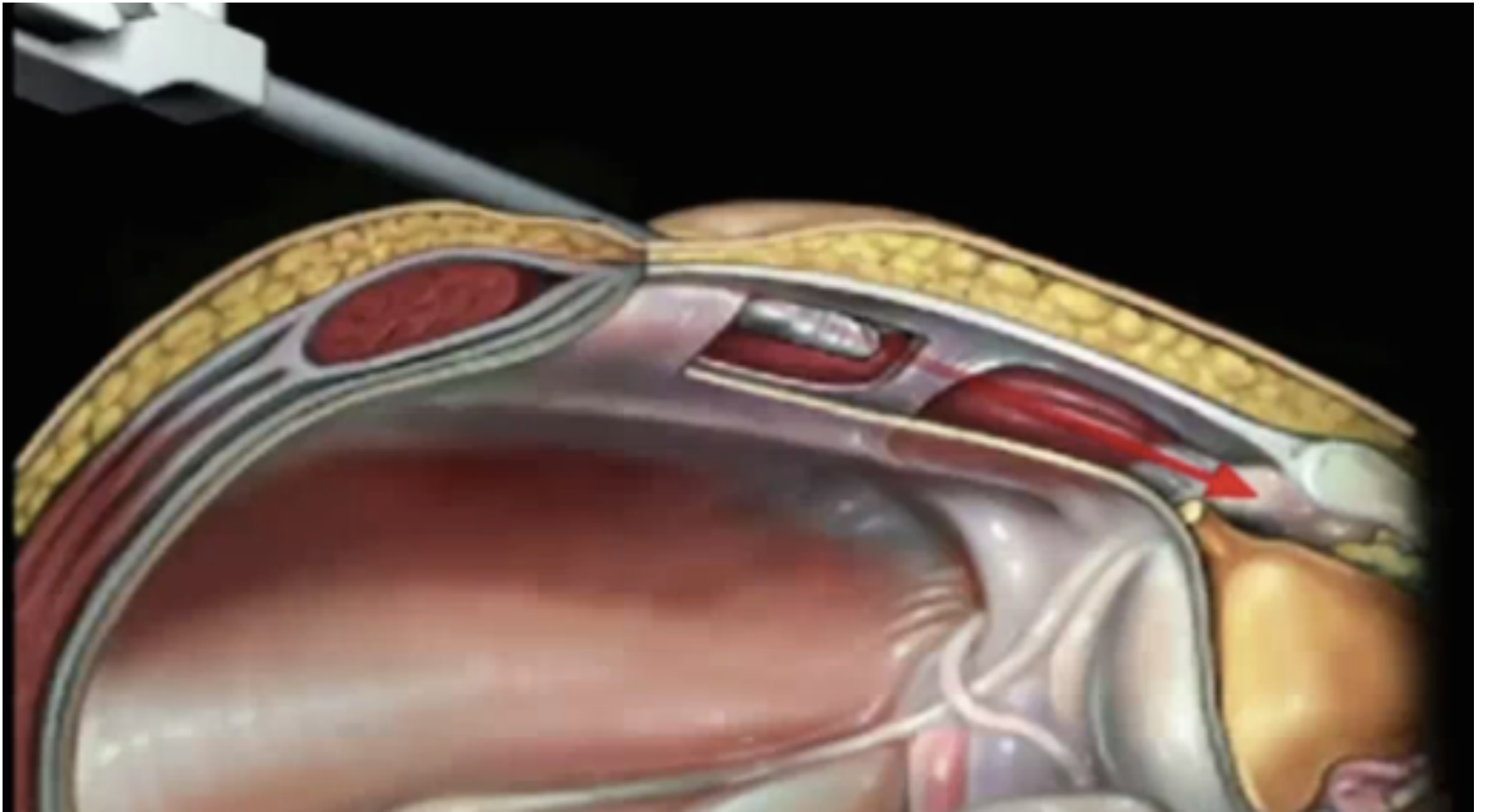
3D Anatomy



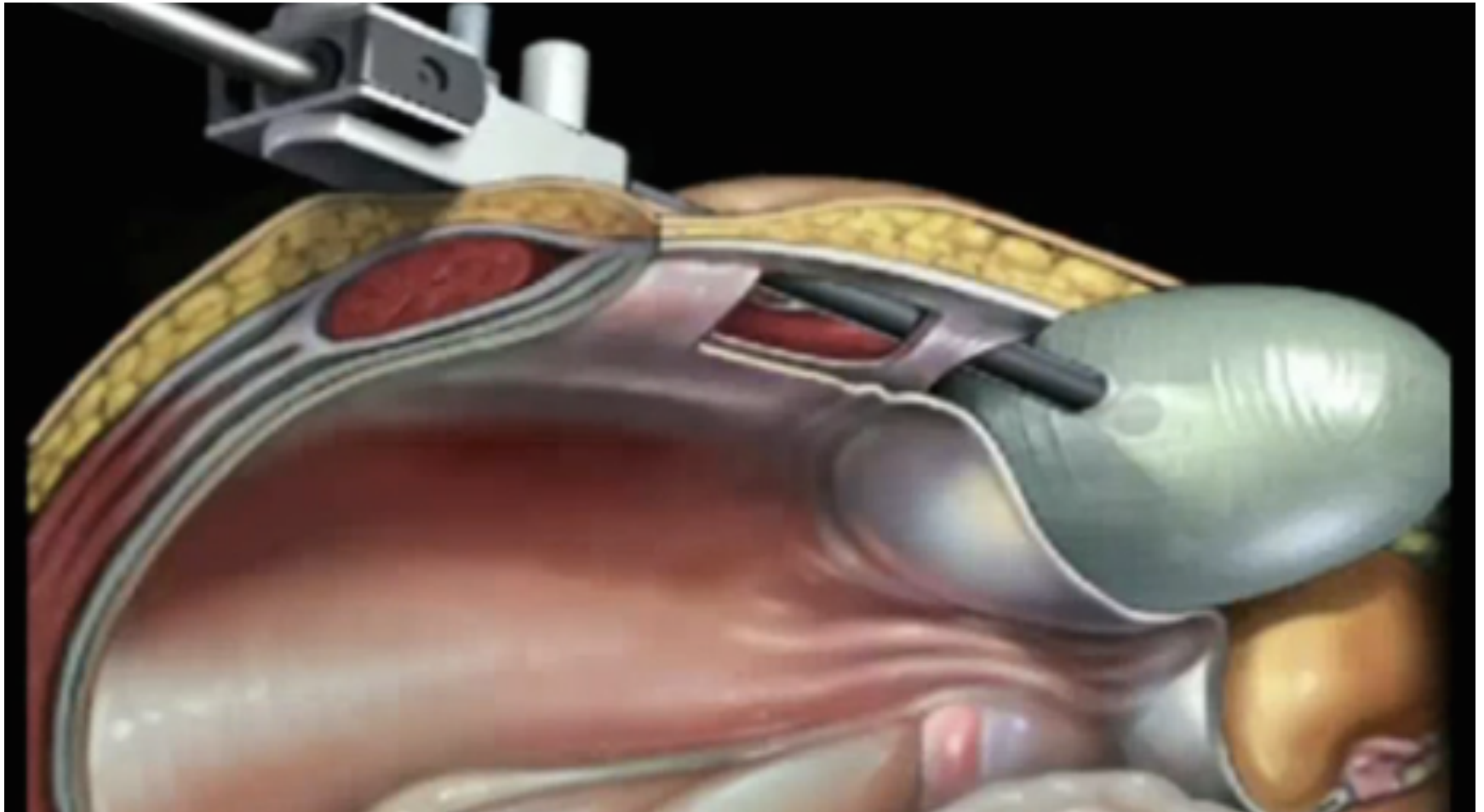
3D Anatomy



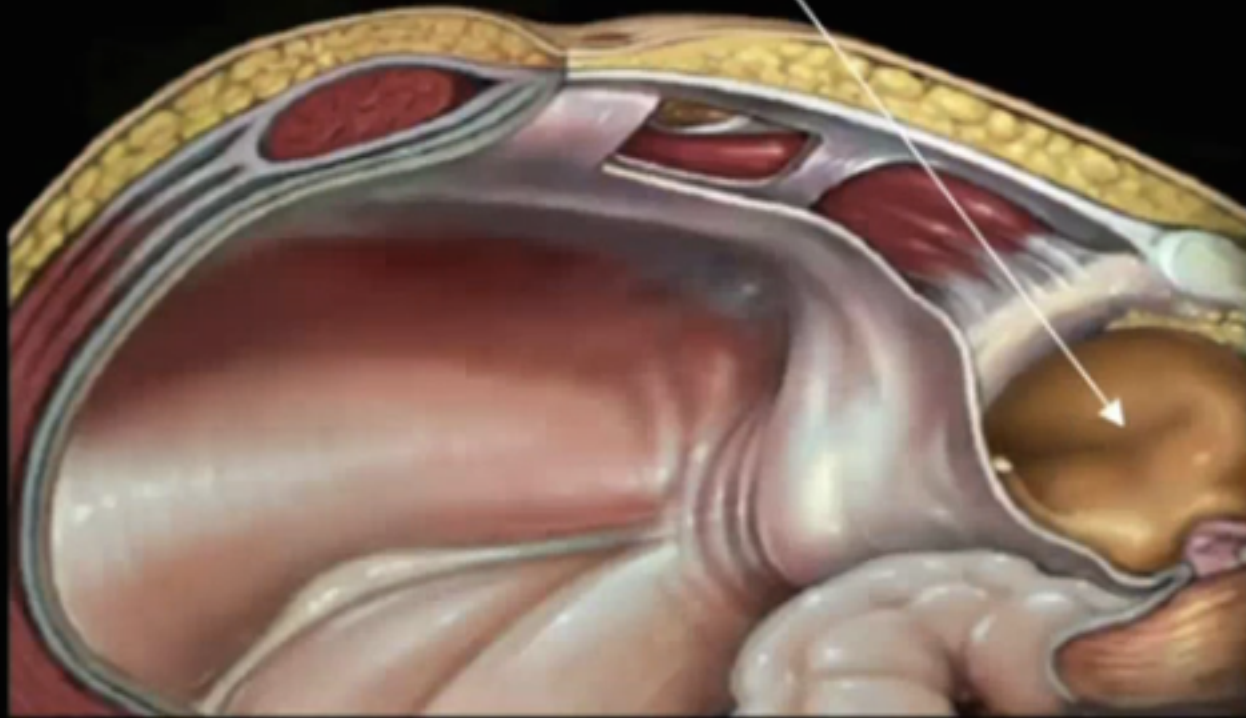
Pre-peritoneal space

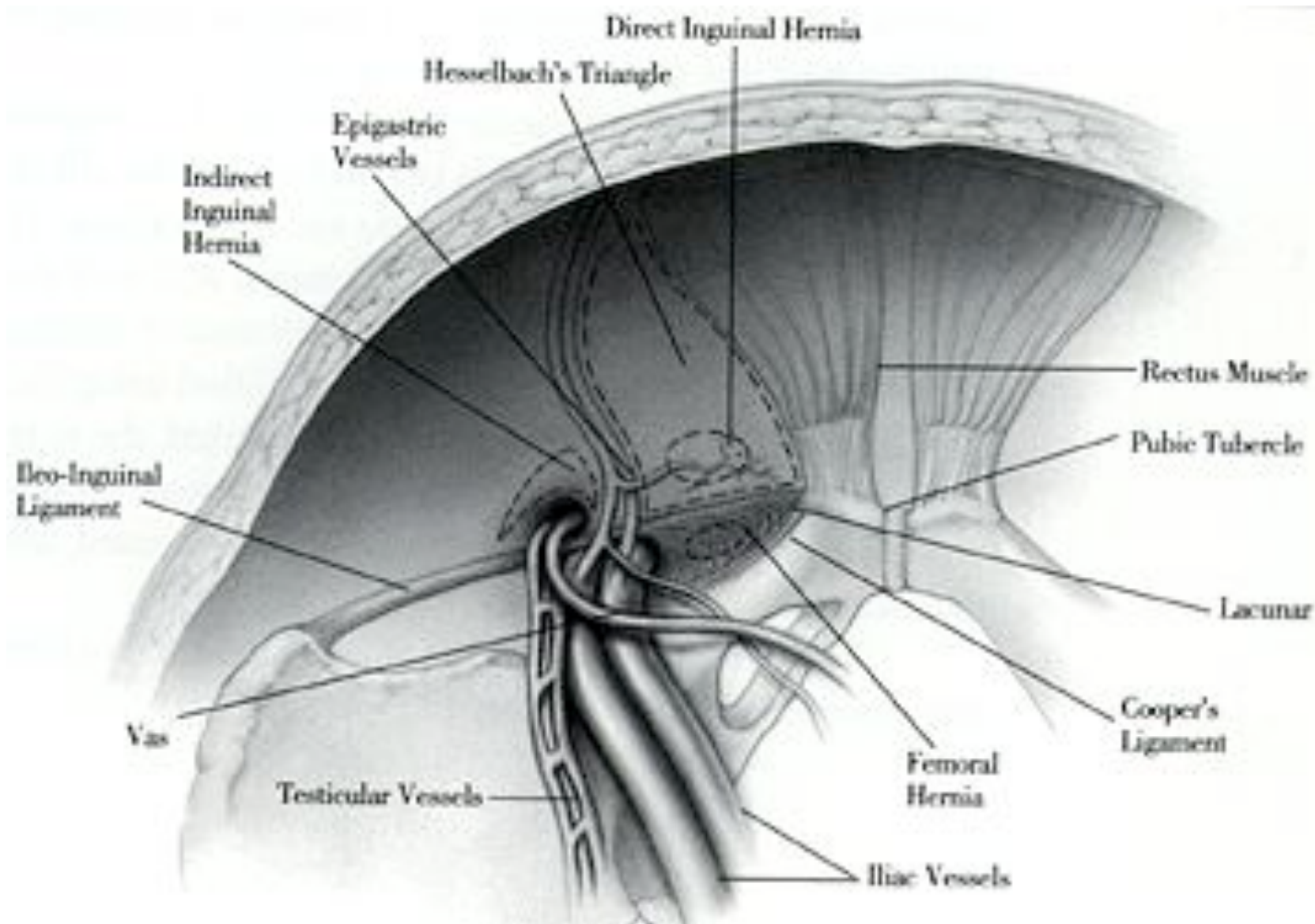


Creating pre-peritoneal pocket

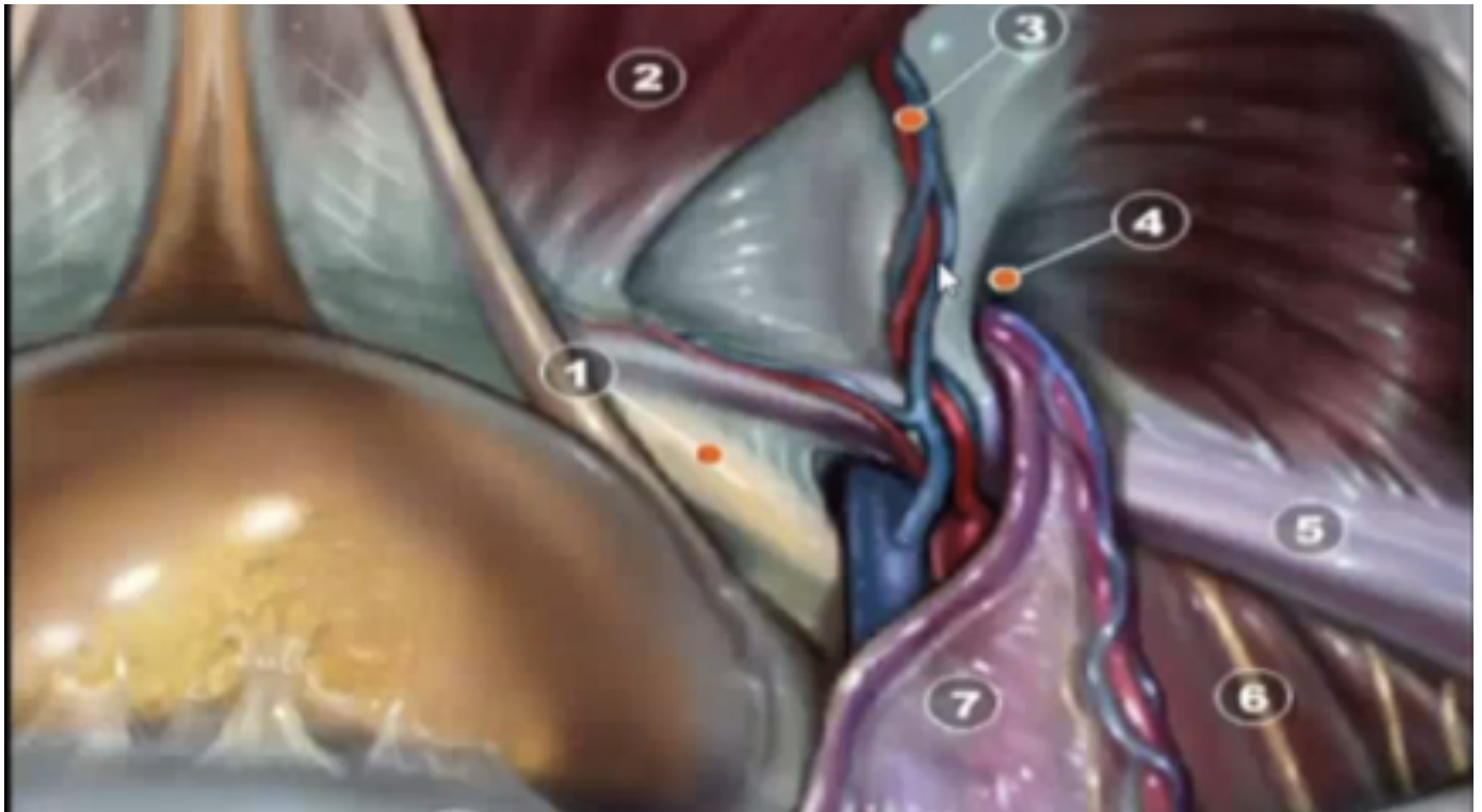


Potential Cavity

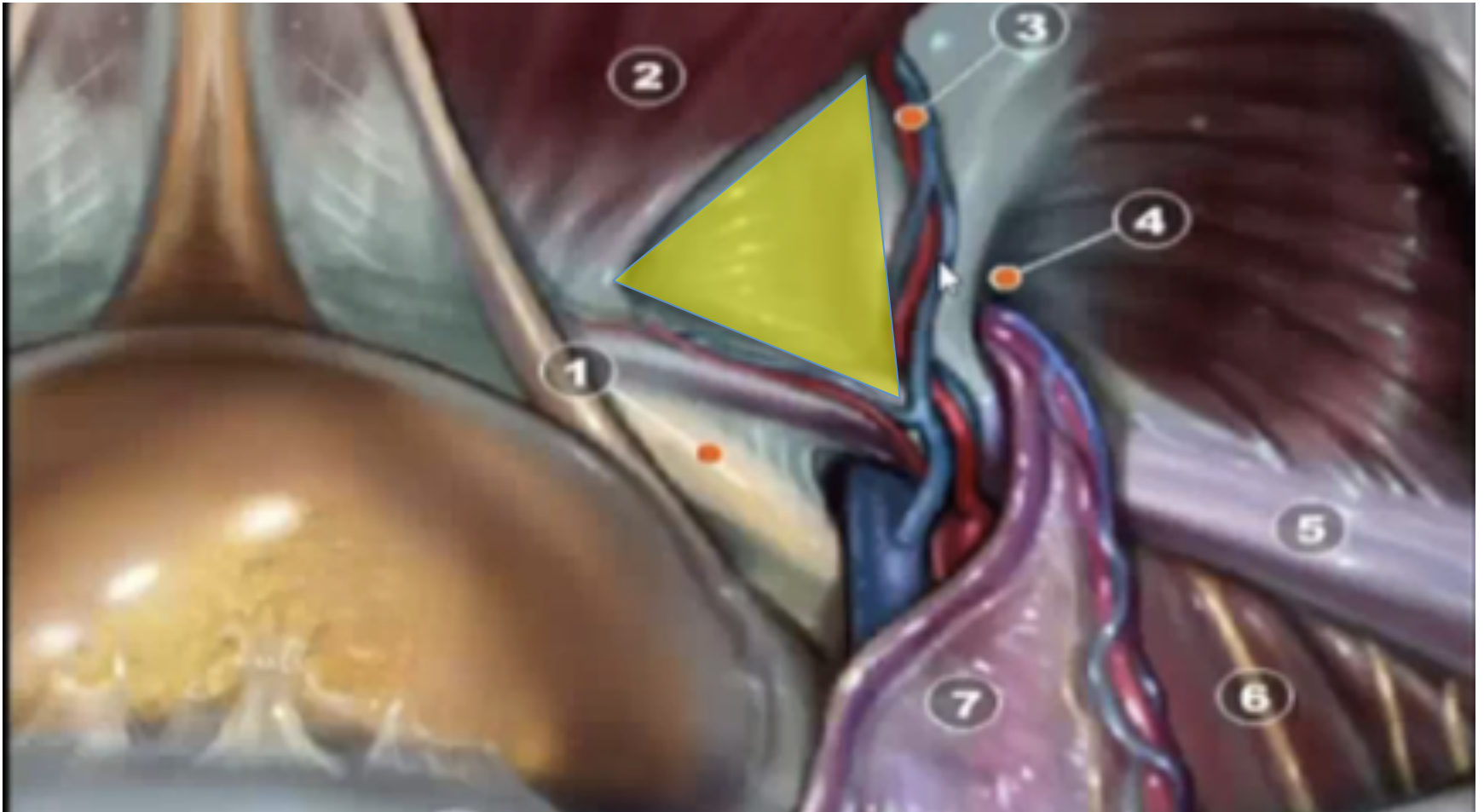




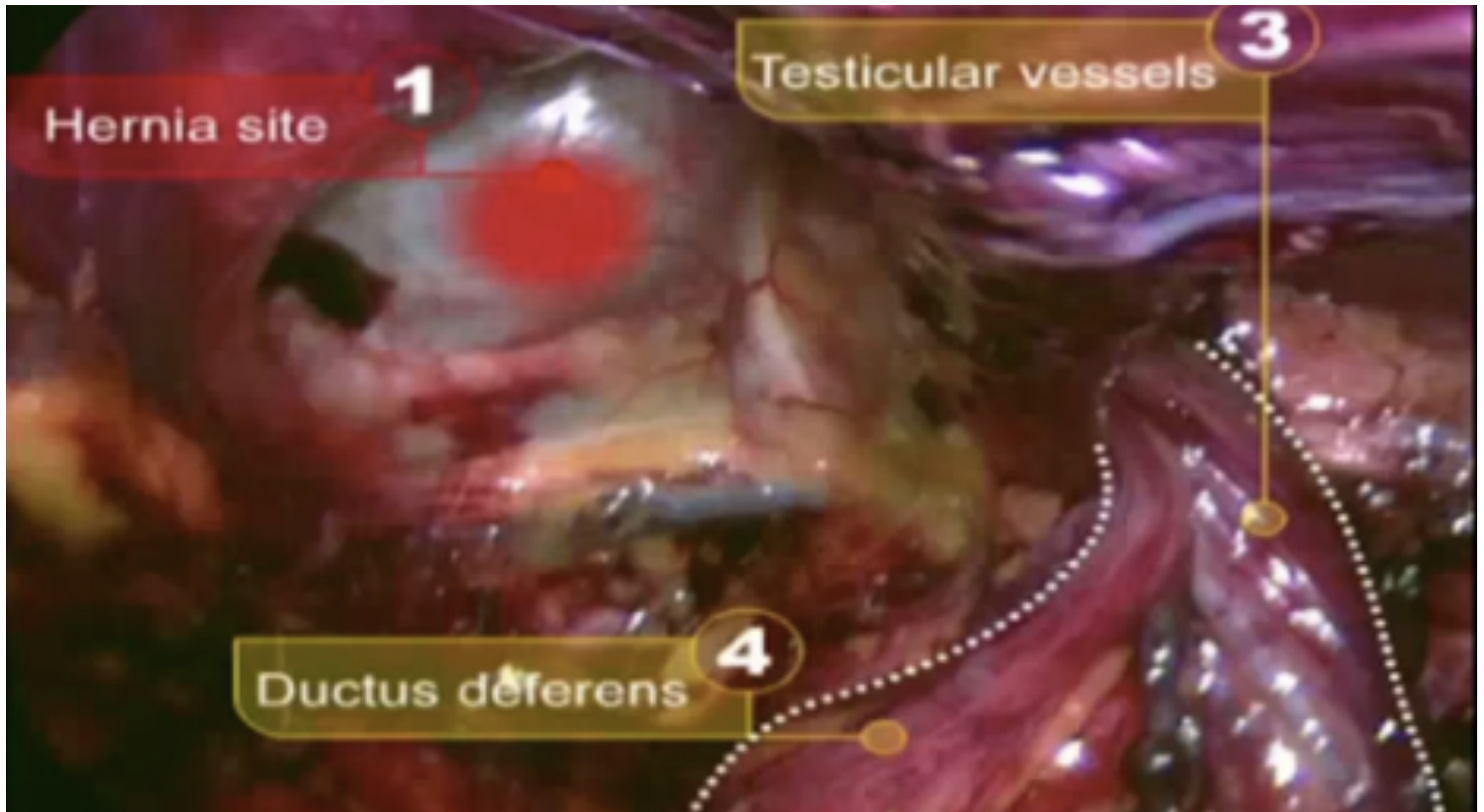
TEP view



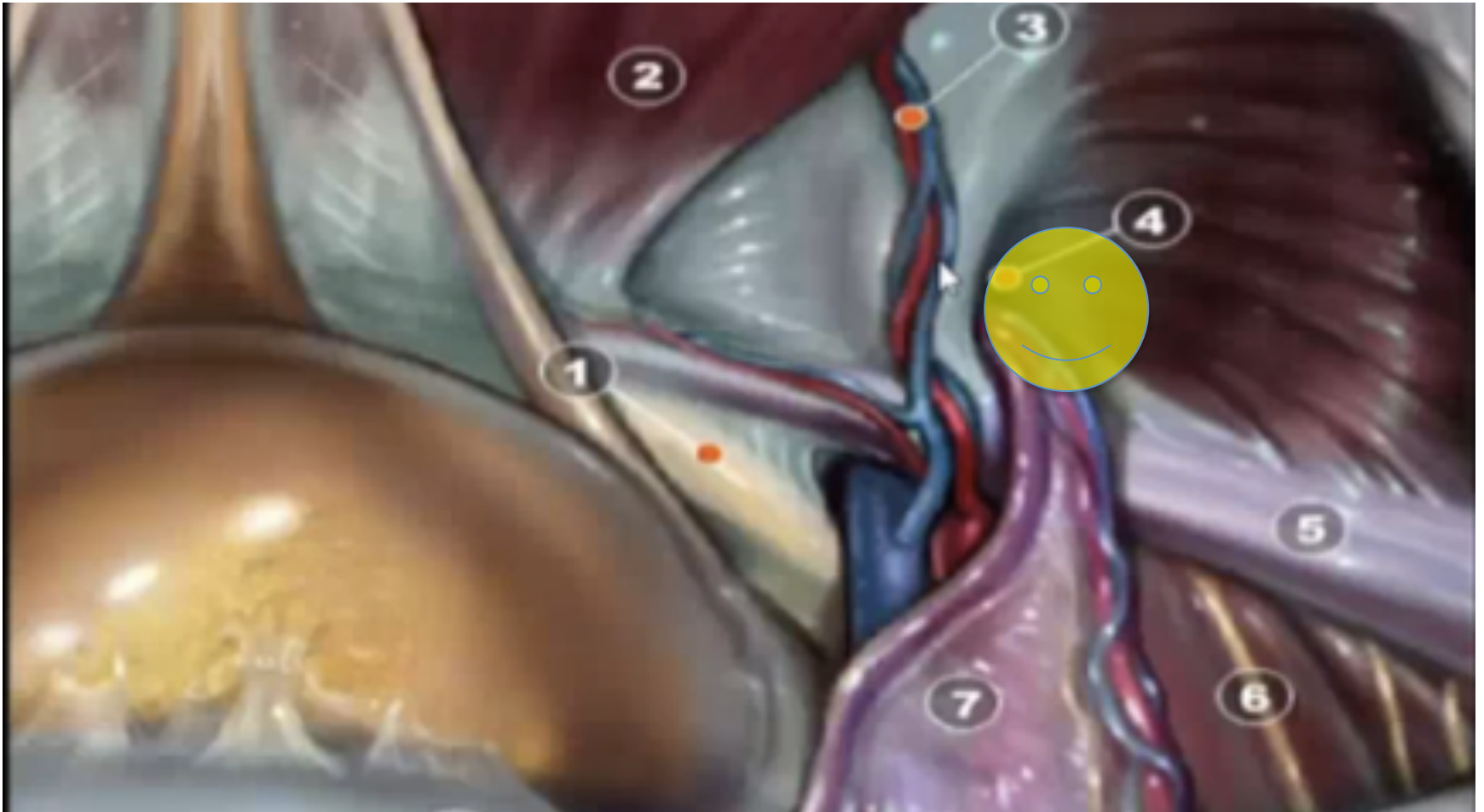
Site of direct hernia



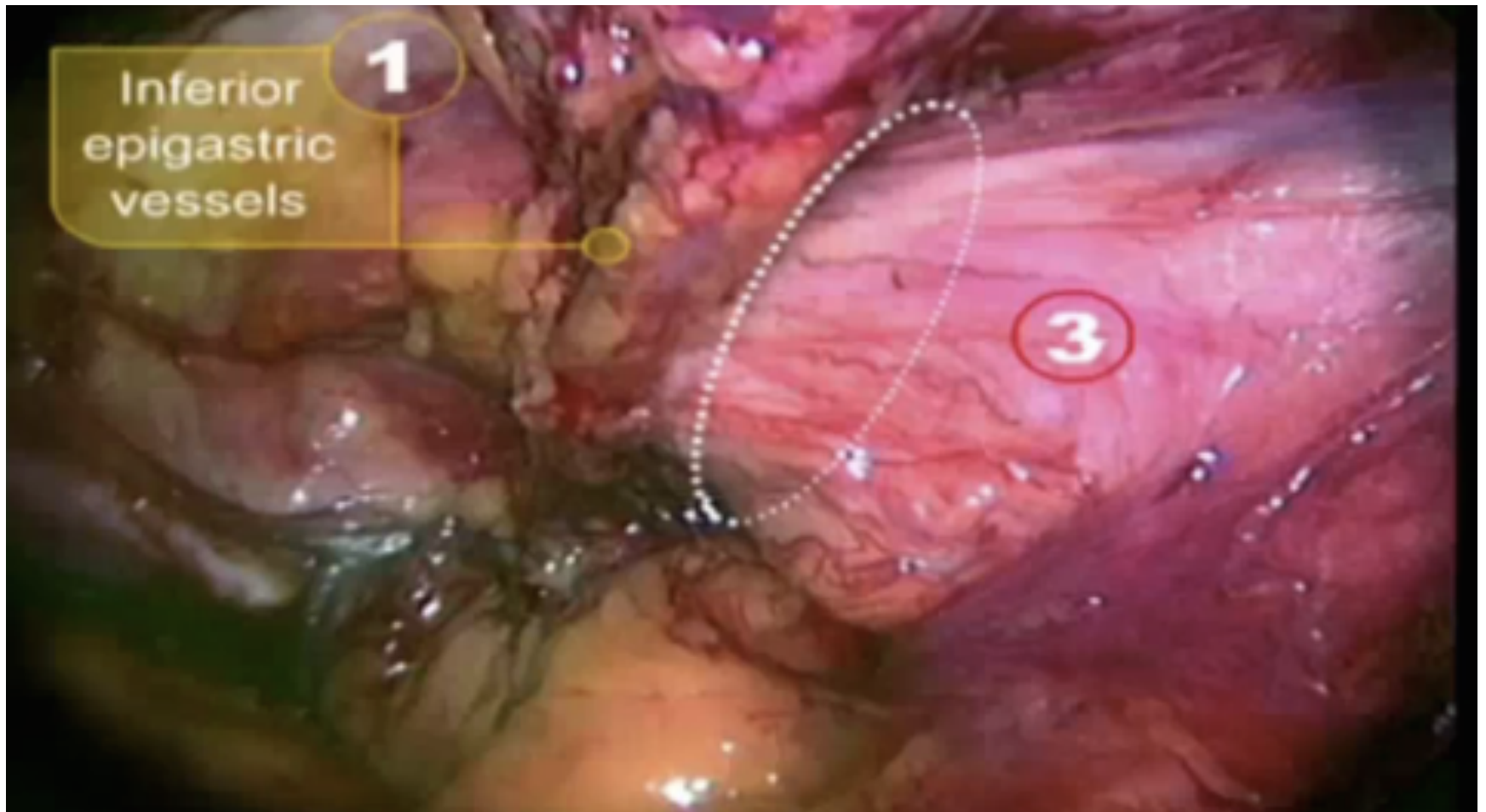
Direct hernia



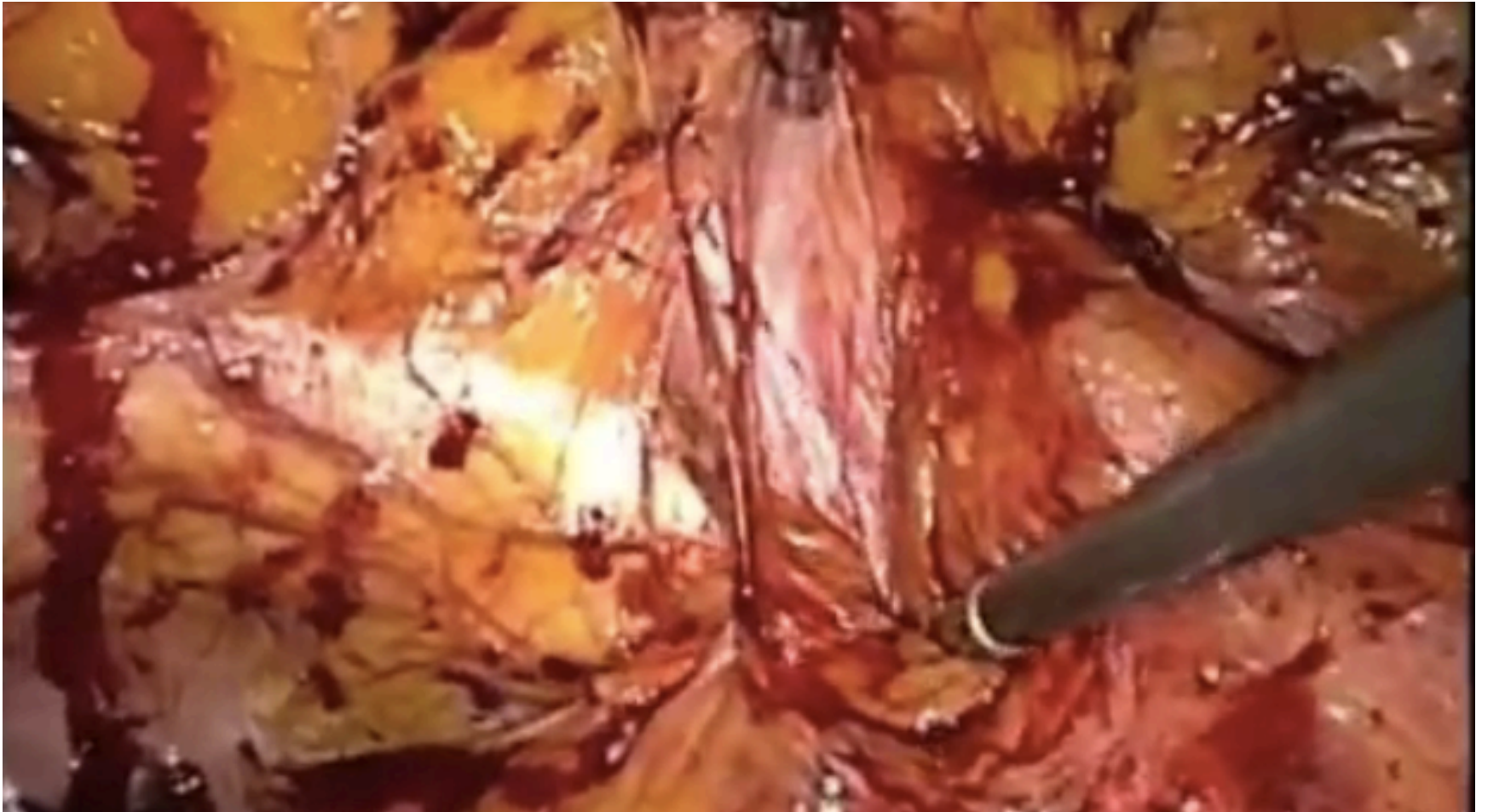
Indirect hernia



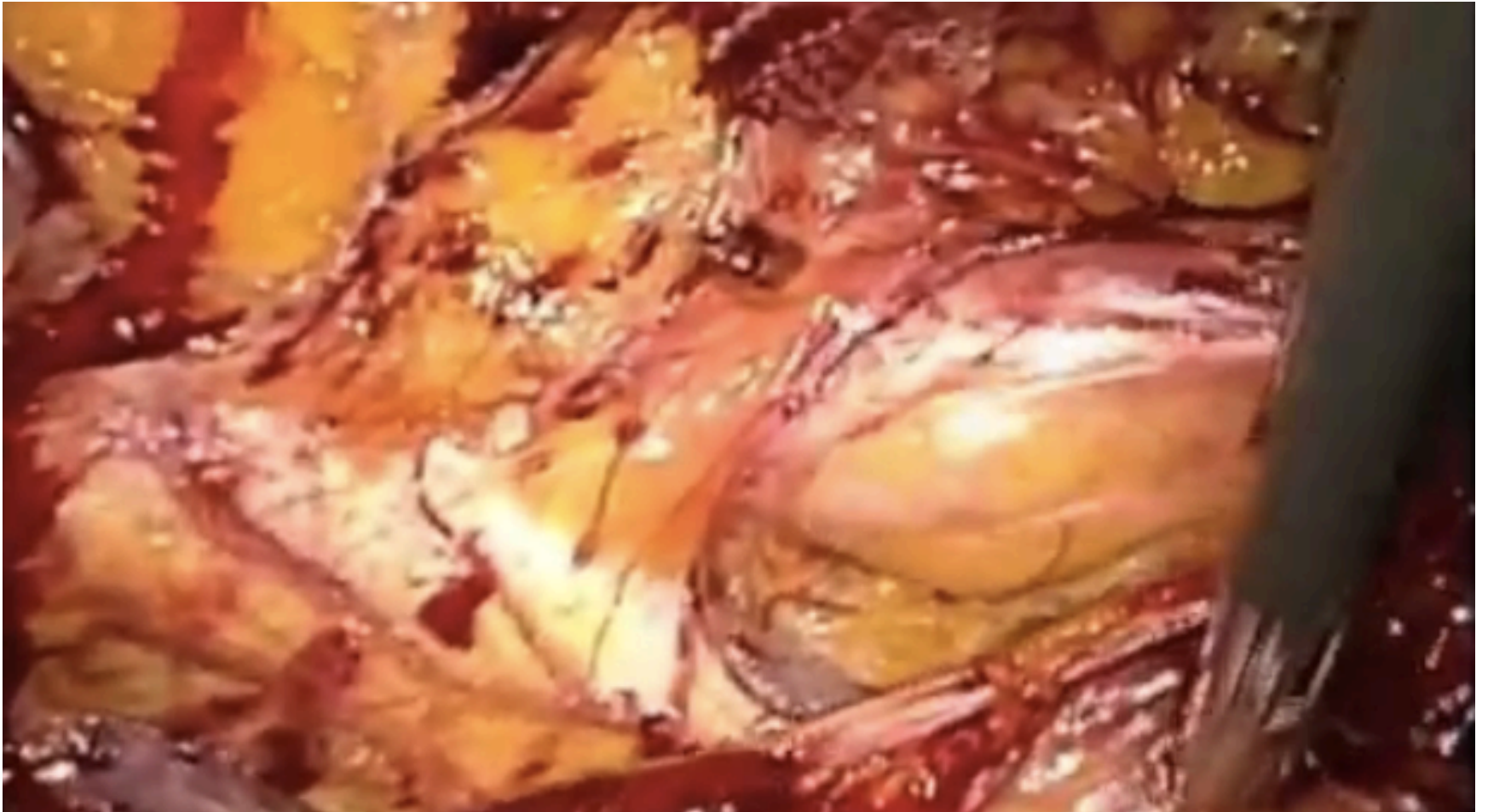
Indirect Hernia



Femoral Hernia



Femoral Hernia



Danger zone

